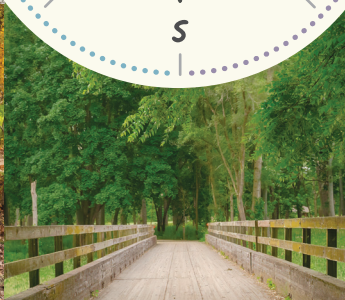


EXPAND YOUR EXPERIENCE



Lake County
Forest Preserves

*YOUR OFFICIAL GUIDE TO MAKING
THE MOST OF 31,200 ACRES*



WELCOME TO YOUR LAKE COUNTY FOREST PRESERVES.

Whether you're a resident or simply visiting, we're glad you're here. More than 31,200 acres of natural areas, 200-plus miles of trails, education centers, off-leash dog areas, golf courses and more are waiting.

IT'S ALL PROTECTED, MAINTAINED AND RESTORED FOR YOU—FOREVER.

General Offices • 1899 W. Winchester Road • Libertyville, IL 60048
Operations & Public Safety Facility • 19808 W. Grand Ave. • Lake Villa, IL 60046
LCFPD.org • 847-367-6640 (General Inquiries) • 847-968-3404 (Public Safety)

TRY SOME TRAILS

LCFPD.ORG/TRAILS

REGIONAL TRAILS

DES PLAINES RIVER TRAIL & GREENWAY LCFPD.org/DPRT

This gravel trail, abbreviated DPRT, spans Lake County for 31.4 miles as it winds through 12 forest preserves. It's open for walking, cycling, cross-country skiing, horseback riding and snowmobiling (between Russell and Wadsworth roads).

The trail follows the Des Plaines River. Road underpasses may close temporarily due to flooding. Check the status map before you visit: LCFPD.org/closures

As part of a regional network, the DPRT connects to the Millennium Trail and the Lake County Division of Transportation's North Shore Bike Path and McClory Trail.

MILLENNIUM TRAIL

LCFPD.org/millennium-trail

The planned 41-mile Millennium Trail is designed to connect central, western and northern Lake County. Today, 33 miles of the Millennium Trail are open to walkers, cyclists and cross-country skiers.

Horseback riding is permitted along an 11-mile section of gravel trail from Lakewood (Wauconda) north to the parking area at Singing Hills (Volo).



PLAN YOUR VISIT

Navigate your adventure with our interactive trail map: LCFPD.org/maps

PAVED TRAILS ARE LOCATED AT:

- Fort Sheridan (Lake Forest)
- Hastings Lake (Lake Villa)
- Independence Grove (Libertyville)
- Millennium Trail, from parking lot at Singing Hills (Volo) to Kestrel Ridge (Round Lake)
- Old School (Mettawa)
- Ryerson Conservation Area (Riverwoods)

TRAIL SURFACES AND ACCESSIBILITY

Most trails are 8-14 feet wide and made of gravel, considered an accessible surface. Six preserves have accessible paved trails.

The paved trails at Hastings Lake, Independence Grove and Old School are plowed in winter. More than a dozen preserves also have short, mowed grass or woodchip trails, which are not considered accessible surfaces.



TRAIL ETIQUETTE

- Stay on marked trails. Respect trail and road closures.
- Deposit litter in proper receptacles.
- Always keep dogs leashed and on trails. Pick up after them.
- Travel at a safe speed. For bicycles and e-bikes, the speed limit is as posted, and 20 mph where not posted. Class 1, 2 and 3 e-bikes are permitted.
- Walk and ride on the right. Allow space on the left for others to pass.
- While walking or cycling, break into single file and control speed when you approach or pass others.
- If cycling with a group, ride single file and control your speed.
- Use caution around horses. Ask the rider if it is okay to pass.

NATURE AS YOUR BACKDROP

LCFPD.ORG/RENTALS

Let nature create a unique setting for your next special event. Seasonal hours vary.



A BEER GARDEN AT INDEPENDENCE GROVE

1899 W. Winchester Road
Libertyville, IL 60048
Late spring-early fall

The Beer Garden features a variety of local craft brews on tap and in cans, wines and hard ciders, along with a variety of food options and nonalcoholic beverages. Plenty of casual lakeside seating available.

LCFPD.org/beer • 847-968-3499
IndependenceGrove@LCFPD.org

B GREENBELT CULTURAL CENTER

1215 Green Bay Road
North Chicago, IL 60064
Year-round

This expansive facility provides a community gathering place perfect to rent for any occasion. It features two classrooms, a multipurpose room and an outdoor amphitheater. Large windows offer panoramic views of the surrounding Greenbelt Forest Preserve.

GreenbeltCulturalCenter.org
847-968-3477 • Greenbelt@LCFPD.org

C INDEPENDENCE GROVE

16400 W. Buckley Road
Libertyville, IL 60048
Visitors Center year-round
Other spaces available seasonally

The beautifully designed, spacious Visitors Center offers panoramic views of the

lake and preserve. It can be reserved for weddings, celebrations, corporate meetings, retreats and community functions. The preserve's Picnic Grove, Native Garden and North Bay Pavilion make ideal settings for outdoor celebrations and photos.

IndependenceGrove.org • 847-968-3499
IndependenceGrove@LCFPD.org **MAIN**

RelishEventsIG.com • 847-665-9211
info@relisheventsig.com **BANQUETS, EVENTS**

D PICNIC SHELTERS

Year-round

Picnic shelters and open areas are popular locations for family reunions, wedding receptions and special events. Reserve online, by phone or at our General Offices.

LCFPD.org/shelters • 847-367-6640

E THE LODGE AT THUNDERHAWK GOLF CLUB

39700 N. Lewis Ave.
Beach Park, IL 60099
Year-round

Overlooking the stunning golf course designed by internationally acclaimed golf architect Robert Trent Jones Jr., the Lodge at ThunderHawk Golf Club is a rustic, yet elegant venue to rent for any occasion. The Lodge also features a large patio for wedding ceremonies or cocktail receptions.

ThunderHawkGolfClub.org • 847-968-3450
ThunderHawkEvents@LCFPD.org

PRESERVATION

HELP THE FOREST PRESERVES DO MORE

LCFPD.ORG / DONATE • 847-968-3110

The Preservation Foundation is the charitable partner of the Forest Preserves.

The mission of the 501(c)(3) nonprofit organization is to extend and accelerate the goals of the Forest Preserves through private philanthropy.

Your gift to the Foundation's endowment campaign will help provide a perpetual, dependable funding source and ensure every acre of habitat we restore remains ecologically healthy: LCFPD.org/endowment



Preservation Foundation
of the Lake County Forest Preserves

ETHEL'S WOODS (ANTIOCH)



Give online:
LCFPD.org/donate



Mail a gift to 1899 W. Winchester Road, Libertyville, IL 60048.



Give by phone:
847-968-3110



Gifts of appreciated stocks or securities are easy to make and provide great tax benefits.



Maximize your support and minimize taxes through IRA distributions, retirement plan assets or life insurance.



Leave a legacy of generosity with an estate gift that meets your financial and philanthropic goals.

RESTORATION

GIVE YOUR TIME AND TALENT

LCFPD.ORG / VOLUNTEER • 847-968-3408 • VOLUNTEER@LCFPD.ORG

Volunteers help make the forest preserves better for everyone. They play key roles in habitat restoration, cultural preservation, education and daily operations.

Opportunities are available for individuals and groups in a variety of settings, indoors and outdoors. No prior experience is required. Training is provided for all positions.



CONNECT WITH HISTORY AND NATURE

LCFPD.ORG/EDUCATION • 847-968-3320

You'll be amazed at what a walk, tour or program with our environmental and history educators will do for you. See your preserves and Lake County's history through new eyes after joining one of our fun, casual programs. Treat yourself to wildflowers, birdwatching, tours of historical sites and engaging presentations. Some programs available in Spanish.

SCHOOLS • SCOUTS • FIELD TRIPS • SUMMER ADVENTURES • GROUP TOURS
ADLAI E. STEVENSON HISTORIC HOME • BONNER HERITAGE FARM • FORT SHERIDAN



ARRIVE CURIOUS. LEAVE INSPIRED.

DUNNMUSEUM.ORG • 847-968-3400

Dunn@LCFPD.org

DUNN MUSEUM

The nationally-accredited Dunn Museum is dedicated to sharing the entwined stories of people, events and nature through exhibitions, education and community engagement.

Focused on local history, culture and natural environments, the Museum offers visitors of all ages an enriching, immersive experience.

1899 W. Winchester Road
Libertyville, IL 60048

ADMISSION

\$6 adults/\$10 nonresidents
\$3 seniors, youth, students/\$6 nonresidents
Free, children ages 3 and under
On Thursday evenings, enjoy FREE admission from 5-8 pm. Sponsored by **USG**

GALLERY AND GIFT SHOP

Monday-Tuesday: Closed

Wednesday, Friday-Sunday: 10 am-4:30 pm

Thursday: 2-8 pm (FREE admission 5-8 pm)

For upcoming special hours, visit our website.



CONNECT WITH US

LCFPD.ORG/CONNECT



READ HORIZONS MAGAZINE

Receive the latest articles and news about your forest preserves in your mailbox with our award-winning quarterly *Horizons* magazine. Subscribe for FREE: LCFPD.org/horizons

FOLLOW US @LCFPD

Connect with us on Facebook, Instagram, X, Flickr, LinkedIn and YouTube.

RECEIVE OUR E-NEWSLETTER

Stay up to date on what's happening in your forest preserves. Receive our monthly e-newsletter: LCFPD.org/eneews-signup

TUNE INTO OUR PODCAST

Listen to our award-winning *Words of the Woods* podcast on Spotify, Apple Podcasts or wherever you prefer: LCFPD.org/podcast

NATURE AND HISTORY BLOGS

Visit the Lake County Nature Blog and Lake County History Blog to find information on local nature and history: LCFPD.org/blogs

ASK AN EDUCATOR

Have a question about Lake County history or nature? Our educators have the answer: AskAnEducator@LCFPD.org

RECREATION

Your preserves offer endless opportunities for year-round outdoor recreation, relaxation and local nature and history exploration: [LCFPD.org/recreation](https://www.lcfdp.org/recreation)

CATCH THEM IF YOU CAN

[LCFPD.ORG / FISHING](https://www.lcfdp.org/fishing)



Fishing is allowed in any forest preserve waterway unless a sign prohibiting it is posted. Waterbody sizes vary, from two acres to 129 acres.

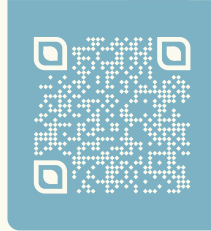
The Illinois Department of Natural Resources requires all anglers ages 16 and up to have a fishing license. Purchase seasonally at the Independence Grove Marina in Libertyville, sporting goods stores or online: [ifishillinois.org](https://www.ifishillinois.org)

State fishing regulations apply. Only worms and minnows permitted as live bait. Dump unwanted bait in trash, not waterways. Two poles maximum. Line fishing only. Use barbless hooks.

FISHING GUIDE

Catch them if you can with the definitive guide to fishing in your preserves. Plan your day of fun with detailed bathymetric maps of 17 major fishing locations and sport fish species typically found there. Read tips from Forest Preserves staff.

Scan the QR code or visit: [LCFPD.org/fishing](https://www.lcfdp.org/fishing)



INDEPENDENCE GROVE (LIBERTYVILLE)



VAN PATTEN WOODS (WADSWORTH)



DES PLAINES RIVER

PADDLE IN THE PRESERVES

[LCFPD.ORG / PADDLING](https://www.lcfdp.org/paddling)

Boaters of all ages and skill levels can enjoy paddling at 12 locations. Paddle down the Des Plaines River from six canoe launches or explore the Fox River from a launch at Fox River Marina (Port Barrington).

All provide river access and parking. Personal car-top canoes, kayaks, paddleboards and other small, non-motorized watercraft are allowed. You may also bring watercraft to launch on four inland lakes.

- Hastings Lake (Lake Villa)
- Lake Carina (Gurnee)
- Long Lake at Grant Woods (Ingleside)
- Sterling Lake at Van Patten Woods (Wadsworth)

Launching is free and at your own risk. Trailers aren't permitted except at Van Patten Woods. Though personal watercraft aren't allowed on the lake at Independence Grove, you can rent fishing boats, canoes, kayaks, stand-up paddleboards and pedal boats at the marina spring through early fall.

RECREATION

LIKE TO HIKE?

LCPD.ORG/HLC

Grab your walking shoes and participate in the annual Hike Lake County (HLC) program while enjoying autumn breezes and colors.

Complete at least seven of 12 designated walks from August 15–November 30 and you'll earn a free commemorative shield or zipper pull. Bicycling and horseback riding do not count toward the program.

At each selected preserve, follow HLC logo signs at the entrance and trailhead to ensure you're walking the correct route.

Record your dog's name on your official travel log and they'll receive a free commemorative dog tag (up to three dogs per person). 🐾

CUBA MARSH (DEER PARK)



WINTER WONDERLAND

LCPD.ORG/WINTER-SPORTS



CROSS-COUNTRY SKIING

When conditions allow, cross-country skiers can use dedicated equestrian trails at Lakewood (Wauconda), Raven Glen (Antioch) and most multipurpose trails. At Ryerson Conservation Area (Riverwoods), a 4-inch snow base is required.

ICE FISHING

Ice fishing is permitted on five designated waterbodies when conditions allow from 6:30 am–sunset daily. It's at your own risk. Check ice thickness before going onto frozen water. A minimum of 4 inches of solid ice over the waterbody is recommended.

ICE SKATING

Bring your ice skates to the lake at Independence Grove (Libertyville) or the rink at Lakewood (Wauconda). Ice hockey is not allowed. The Lakewood rink is shallow and typically freezes earlier in the season than the lake at Independence Grove (Libertyville), where a 4.5-inch ice layer is required for skating.

SLEDDING

Sled hills are located at Lakewood (Wauconda) and Old School (Mettawa). Snowboards, metal runners or toboggans are not permitted.

SNOWMOBILING

Snowmobilers can use more than 21 miles of designated trails within the preserves. Many connect to other snowmobile trails. A 4-inch snow base and frozen ground are required.

SNOWSHOEING

Snowshoeing is allowed on all trails.

SOLAR-LIT TRAILS

Illuminate your evening winter walk with solar-lit trails at Old School (Mettawa) and Lakewood (Wauconda). Solar lights guide walkers, skiers and snowshoers after dark. Illuminated trails and adjacent parking lots are open 6:30 am–9 pm daily, early November–mid-March. Lights switch on after sunset.

INDEPENDENCE GROVE (LIBERTYVILLE)

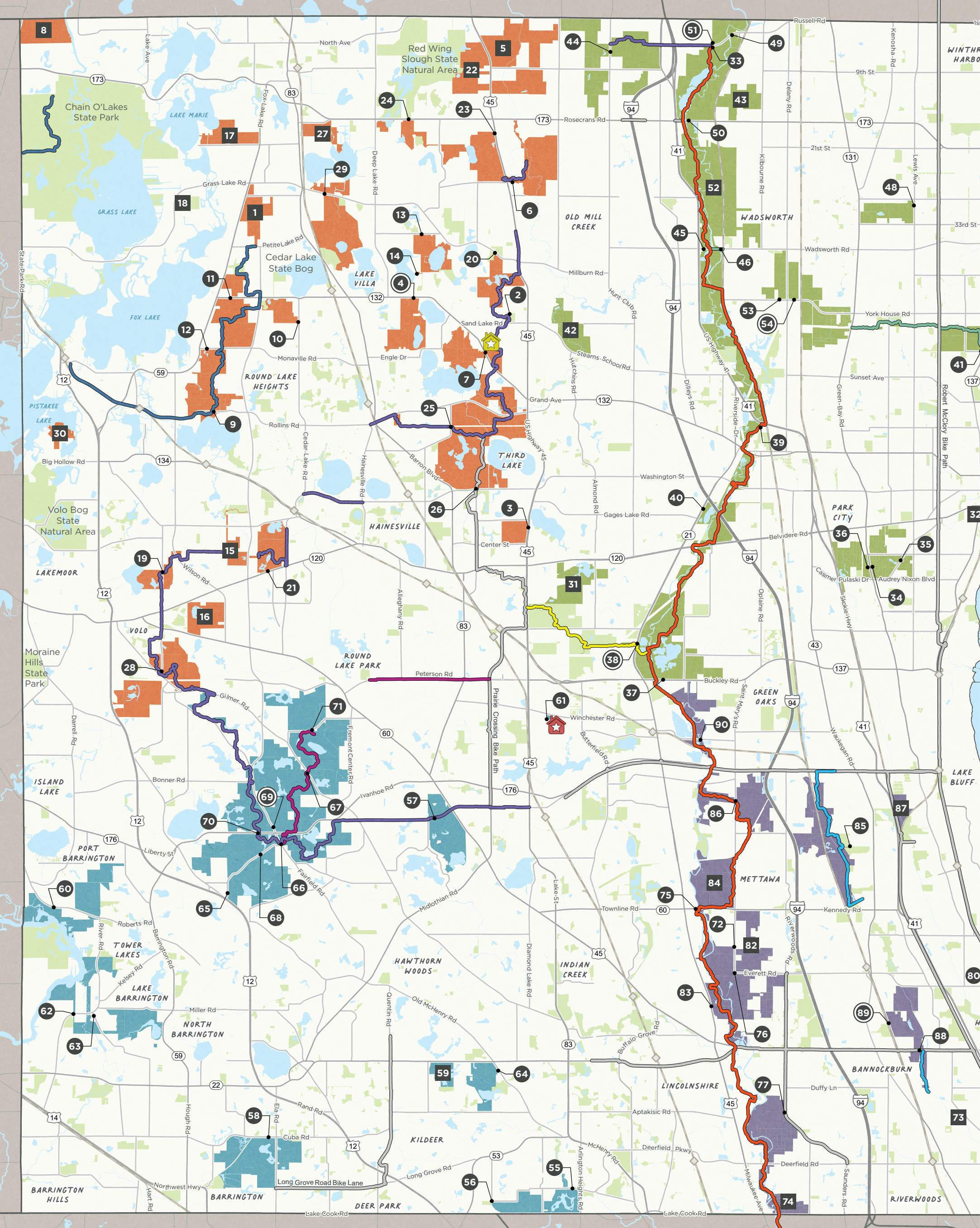


LAKWOOD (WAUCONDA)



LAKWOOD (WAUCONDA)





- | | | | |
|-------------------------------------|-------------------|--------------------------------|-----------------------|
| Forest Preserve | Vehicle Access | Casey Trail | Fort Hill Trail |
| State Land & Open Space | No Vehicle Access | Chain O'Lakes Bike Path | Middlefork Greenway |
| General Offices & Dunn Museum | Permit Required | Des Plaines River Trail (DPRT) | Millennium Trail |
| Operations & Public Safety Facility | Metra Station | DPRT to Lyons Woods Trail | Other Regional Trails |

PHOTOGRAPHY AND ILLUSTRATION
 Bob Callebert, Jason Cristino, Tim Elliott, Liz Rose Fisher, Samantha Gallagher, Isavel Gonzalez, Kenneth Libbrecht / Science Photo Library, R. Scott McNeill, Justine Neslund, Dave Smith

MAP CURRENT AS OF
 February 18, 2025



EMBRACING DIVERSITY
 At the Lake County Forest Preserves, we are committed to fostering a culture that embraces diversity and inclusion, seeks to understand our differences and leverages the power of diverse perspectives to shape a brighter future.



KNOW BEFORE YOU GO

HOURS

Most preserves are open 6:30 am–sunset, daily. Different hours apply at the Dunn Museum, Fox River Marina, General Offices, golf courses, Greenbelt Cultural Center, Independence Grove Visitors Center, off-leash dog areas, Operations and Public Safety Facility, Ryerson Education Center and Ryerson Welcome Center: [LCFPD.org/preserves](https://www.lcfd.org/preserves)

ADMISSION

There is no admission charge for any forest preserve apart from a nonresident parking fee during spring–fall at Independence Grove (Libertyville). The fee is \$6 per car Monday–Thursday and \$12 per car Friday–Sunday and holidays. Parking for Lake County residents is FREE. On Concerts in the Plaza evenings, a \$10 vehicle entrance fee applies to all cars after 4:30 pm.

FOR EVERYONE'S ENJOYMENT

- Stay on the trails.
- Leave nature as you find it.
- Park in lots only. Vehicles left after closing will be towed at owner's expense.
- No alcohol within parking areas, unless otherwise permitted.
- Wading, swimming, collecting, hunting, firearms (except as permitted by the Concealed Carry Act), releasing animals or plants and off-road or motorized vehicles are not permitted.
- Horses, fishing, ice fishing, snowmobiles, camping, fires and watercraft are permitted in authorized areas only, and with proper registration or permit.
- The use of drones is only allowed at a designated flying field at Van Patten Woods (Wadsworth), with the purchase of an annual permit. Drones can't be launched or landed at any other forest preserve location.
- Horseback riders yield to pedestrians. Cyclists yield to pedestrians and equestrians. Snowmobilers yield to all.

ALERTS AND CLOSURES

Check the status of preserve improvements, construction projects, prescribed burns and weather-related closures: [LCFPD.org/closures](https://www.lcfd.org/closures)

BOAT SLIPS, LAUNCH AND STORAGE

Fox River Marina (Port Barrington) features a four-lane boat launch, 169 boat slips and indoor storage: [FoxRiverMarina.org](https://www.foxrivermarina.org)

DOGS

Leashed dogs are allowed on marked trails in all preserves except Independence Grove (Libertyville), Ryerson Conservation Area (Riverwoods) and portions of Lakewood (Wauconda). Dogs can exercise and play at five off-leash dog areas: [LCFPD.org/dog](https://www.lcfd.org/dog)

GOLF

Play a round of 9 or 18 holes, practice your teeshot and enjoy a meal or beverage at three beautiful golf courses: [LCFPD.org/golf](https://www.lcfd.org/golf)

PERMITS

Permits are required for picnic shelter rentals, off-leash dog areas, horse trail use, drone and model aircraft flying, professional photography and more: [LCFPD.org/permits](https://www.lcfd.org/permits)

PUBLIC SAFETY

For emergencies, call 911. For nonemergency public safety issues, call our Ranger Police at **847-968-3404** (M–F, 6:30 am–3 pm). After hours, call the Lake County Sheriff's 911 Communication Center at **847-549-5200**. You can also email FP_police@LCFPD.org.

SPECIAL ACCOMMODATIONS

The Forest Preserves makes all reasonable modifications to ensure people with disabilities have equal opportunity to enjoy all programs, services and activities: [LCFPD.org/accessibility](https://www.lcfd.org/accessibility)

We allow service animals (dogs and miniature horses) to access most public areas within preserves and facilities. To request accommodations, contact our ADA coordinator by phone, email or mail.

847-968-3214 • ADAFeedback@LCFPD.org



INDEPENDENCE GROVE OFF-LEASH DOG AREA (LIBERTYVILLE)