



DATE: October 31, 2022

MEMO TO: Jessica Vealitzek, Chair
Operations Committee

FROM: Mary E. Kann
Director of Administration

RECOMMENDATION: Recommend approval of a Resolution awarding a Contract for the purchase of replacement computing equipment and supplies to CDW-Government, Inc., under the National IPA Technology Solutions Contract #2018011-02, in an amount not to exceed \$261,468.00.

STRATEGIC DIRECTION SUPPORTED: Organizational Sustainability

FINANCIAL DATA: Funding for computer hardware replacement was approved as a part of the adopted FY 2023 Budget, in accounts 91124100-805100 and 91123800-604100 (\$143,818.00), 91124100-604100 (\$76,950), 19223800-601000, 19223800-604000, 19223800-604100, 19223800-641200, 19223800-643000 (\$28,700.00), and 19224000-7014000 (\$12,000.00).

BACKGROUND: The District provides replacement funding for computer hardware. The District will be replacing five servers, the District Web Filter, a backup tape library, network switches and 55 desktop and laptop computers throughout the District, as well as purchasing peripheral computing equipment, software, and supplies.

REVIEW BY OTHERS: Chief Operations Officer, Director of Finance, Purchasing Manager, Information Technology Officer, Corporate Counsel.

**LAKE COUNTY FOREST PRESERVE DISTRICT
LAKE COUNTY, ILLINOIS**

**A RESOLUTION AWARDING A CONTRACT FOR THE PURCHASE OF
REPLACEMENT COMPUTING EQUIPMENT AND SUPPLIES
TO CDW-GOVERNMENT, INC.**

WHEREAS, the Lake County Forest Preserve District (the “District”) desires to purchase (i) certain replacement computing equipment, including five servers, the District’s Web Filter, a backup tape library, network switches and 55 desktop and laptop computers throughout the District and (ii) certain peripheral computing equipment, software, and supplies (collectively, the “Equipment”); and

WHEREAS, pursuant to the Illinois Governmental Joint Purchasing Act, 30 ILCS 525/1, et seq., any governmental unit may purchase personal property, supplies, and services jointly with one or more other governmental units if one of the governmental units has publicly advertised for, and received, competitive, sealed bids or proposals and has awarded a contract for such personal property, supplies, and services to the lowest responsible bidder or the highest ranking proposer, all in accordance with such Act; and

WHEREAS, the City of Mesa, Arizona, has publicly advertised for, and received, competitive proposals for the Equipment, including a proposal by CDW-Government, Inc. (“CDW-G”); and

WHEREAS, the City of Mesa, Arizona, has awarded a contract for the Equipment to CDW-G, as the highest-ranking proposer for the Equipment (the “Mesa Contract”) and the Mesa Contract provides that other units of local government may also enter into contracts with CDW-G, on the same terms as provided in the Mesa Contract; and

WHEREAS, it is in the District’s best interest to award a contract for the Equipment to CDW-G on the same terms as provided in the Mesa Contract (the “Contract”);

NOW, THEREFORE, BE IT RESOLVED by the Board of Commissioners of the Lake County Forest Preserve District, Lake County, Illinois, **THAT**:

Section 1: Recitals. The recitals set forth above are incorporated as a part of this Resolution by this reference.

Section 2: Award of Contract. The proposal submitted by CDW-G is hereby accepted and a Contract for the Equipment in the amount not to exceed \$261,468.00 (the “Contract Price”) is hereby awarded to CDW-G.

Section 3: Execution of Contract: The Executive Director of the District is hereby authorized and directed to execute the Contract for the Equipment in the amount of the Contract Price.

Section 4: Payments. The District Treasurer shall make payments under the Contract only pursuant to and in accordance with the Contract terms.

Section 5: Effective Date. This Resolution shall be in full force and effect from and after its passage and approval in the manner provided by law.

PASSED this ____ day of _____, 2022.

AYES:

NAYS:

APPROVED this ____ day of _____, 2022.

Angelo D. Kyle, President
Lake County Forest Preserve District

ATTEST:

Julie Gragnani, Secretary
Lake County Forest Preserve District

Exhibit No. _____

PRICING

Item #	Product	Product / Group	Discount	Manufacturer Name
1)	Group 1 - Systems	1) Desktops	2.10%	All
		2) Notebooks	2.10%	All
		3) Tablets	2.25%	All
		4) Servers (1 Processor, 2 Processor, 4+ Processor, Blade, Tower, Unix, Handhelds, etc.)	4.00%	All
2)	Group 2 - Input Devices	5) Keyboards	6.75%	All
		6) Mice	6.75%	All
		7) Imaging Scanners	3.00%	All
		8) POS Scanners	3.00%	All
		9) Pointing Devices	3.50%	All
		10) Bar Code Readers	4.25%	All
		11) Audio Input	15.00%	All
		12) Input Adapters	5.00%	All
		13) PC and Network Cameras	5.50%	All
		14) Input Cables	15.00%	All
		15) Input Accessories	6.75%	All
3)	Group 3 - Output Devices	16) Displays	3.50%	All
		17) Printers	3.00%	All
		18) Inkjet Printers	3.00%	All
		19) Inkjet Photo Printers	3.00%	All
		20) Laser Printers	3.00%	All
		21) Label Printers	4.25%	All
		22) Dot Matrix Printers	3.00%	All
		23) Multi-Function Printers	3.00%	All
		24) Wide Format Printers	3.00%	All
		25) Multi-Function Inkjet Printers	3.00%	All
		26) Wide Format Printers	3.00%	All
		27) Fax Machine Printers	3.00%	All
		28) Printer Accessories	3.00%	All
		29) Projectors	3.50%	All
30) Projector Accessories	3.50%	All		
31) Audio Input	15.00%	All		
32) Video Cards	3.50%	All		

PRICING

		33) Sound Cards	3.50%	All
		34) Output Accessories	6.75%	All
		35) Printer Consumables	3.00%	All
4)	Group 4 - Memory	36) Desktop	13.00%	All
		37) Flash	5.50%	All
		38) Networking	13.00%	All
		39) Notebook	13.00%	All
		40) Printer / Fax	13.00%	All
		41) Server	13.00%	All
5)	Group 5 - Storage Devices	42) Adapters Fiber Channel	5.50%	All
		43) Adapters FireWire / USB	5.50%	All
		44) Adapters IDE/ATA/SATA	5.50%	All
		45) Adapters RAID	5.50%	All
		46) Adapters SCSI	5.50%	All
		47) Bridges & Routers	5.50%	All
		48) Disk Arrays	5.50%	All
		49) Disk Arrays JBOD	5.50%	All
		50) Drives Magneto-Optical	5.50%	All
		51) Drives Removable Disks	5.50%	All
		52) Fiber Channel Switches	5.50%	All
		53) Hard Disks - External	5.50%	All
		54) Hard Disks - Fiber Channel	5.50%	All
		55) Hard Disks - IDE/ATA/S	5.50%	All
		56) Hard Disks - Notebook	5.50%	All
		57) Hard Disks - SCSI	5.50%	All
		58) Networking Accessories	5.50%	All
		59) Optical Drives - CD-ROM	5.50%	All
		60) Optical Drives - CD-RW	5.50%	All
		61) Optical Drives - DVD-CD	5.50%	All
		62) Optical Drives - DVD-RW	5.50%	All
		63) Storage Accessories	5.00%	All
64) Storage - NAS	5.00%	All		
65) Storage - SAN	5.00%	All		
66) Tape Autoloaders -AIT	5.00%	All		
67) Tape Autoloaders - DAT	5.00%	All		
68) Tape Autoloaders - DLT	5.00%	All		
69) Tape Autoloaders - LTO	5.00%	All		
70) Tape Drives - 4mm	5.00%	All		

PRICING

		71) Tape Drives - 8mm/VXA	5.00%	All
		72) Tape Drives - AIT	5.00%	All
		73) Tape Drives - DAT	5.00%	All
		74) Tape Drives - DLT	5.00%	All
		75) Tape Drives - LTO/Ultrium	5.00%	All
		76) Tape Drives SDLT	5.00%	All
		77) Tape Drives - Travan	5.00%	All
6)	Group 6 - Network Equipment	78) 10/100 Hubs & Switches	5.50%	All
		79) Bridges & Routers	5.50%	All
		80) Gigabit Hubs & Switches	5.50%	All
		81) Concentrators & Multiplexers	5.50%	All
		82) Hardware Firewalls	5.50%	All
		83) Intrusion Detection	5.50%	All
		84) KVM	4.00%	All
		85) Modems	5.50%	All
		86) Network Test Equipment	5.50%	All
		87) Network Adapters	5.50%	All
		88) Network Cables	15.00%	All
		89) Network Accessories	5.50%	All
		90) Repeaters & Transceivers	5.50%	All
		91) Wireless LAN Accessories	5.50%	All
		92) Token Authentication	5.50%	All
		93) 10G Fiber Optic Transceivers	5.50%	All
94) 1G Fiber Optic Transceivers	5.50%	All		
7)	Group 7 - Software	95) Licensing Packages (e.g. Microsoft)	4.00%	All
		96) Licensing Backup	4.00%	All
		97) Licensing Barcode/OC	4.00%	All
		98) Licensing Business Application	4.00%	All
		99) Licensing CAD/CAM	4.00%	All
		100) Licensing - Cloning	4.00%	All
		101) Licensing - Computer Services	4.00%	All
		102) Licensee - Database	4.00%	All
		103) Licensing - Development	4.00%	All
		104) Licensing - Entertainment	4.00%	All
		105) Licensing - Financial	4.00%	All
		106) Licensing - Flow Chart	4.00%	All
		107) Licensing - Graphic Design	4.00%	All
		108) Licensing - Handheld	4.00%	All

PRICING

		109) Licensing - Network OS	4.00%	All
		110) Licensing - OS	4.00%	All
		111) Licensing - Personal Organization	4.00%	All
		112) Licensing - Presentation	4.00%	All
		113) Licensing - Reference	4.00%	All
		114) Licensing - Report Analysis	4.00%	All
		115) Licensing - Spreadsheet	4.00%	All
		116) Licensing - Utilities	4.00%	All
		117) Licensing - Warranties	4.00%	All
		118) Licensing - Web Development	4.00%	All
		119) Licensing - Word Processing	4.00%	All
		120) Software - Backup	4.00%	All
		121) Software - Barcode / OCR	4.00%	All
		122) Software - Business Application	4.00%	All
		123) Software - CAD/CAM	4.00%	All
		124) Software - Cloning	4.00%	All
		125) Software - Computer Services	4.00%	All
		126) Software - Database	4.00%	All
		127) Software - Development	4.00%	All
		128) Software - Entertainment	4.00%	All
		129) Software - Financial	4.00%	All
		130) Software - Flow Chart	4.00%	All
		131) Software - Graphic Design	4.00%	All
		132) Software - Handheld	4.00%	All
		133) Software - OS	4.00%	All
		134) Software - Personal Organization	4.00%	All
		135) Software - Presentation	4.00%	All
		136) Software - Reference	4.00%	All
		137) Software - Report Analysis	4.00%	All
		138) Software - Spreadsheet	4.00%	All
		139) Software - Utilities	4.00%	All
		140) Software - Warranties	4.00%	All
		141) Software - Web Development	4.00%	All
		142) Software - Word Processing	4.00%	All
8)	Group 8 - Media Supplies	143) Media - 4mm tape	5.50%	All
		144) Media - AIT tape	5.50%	All
		145) Media - DAT tape	5.50%	All
		146) Media - DLT tape	5.50%	All

PRICING

		147) Media LTO / Ultrium tape drive	5.50%	All
		148) Media - Magneto - Optical	5.50%	All
		149) Media - Optical	5.50%	All
		150) Media - SLR tape	5.50%	All
		151) Media - Travan tape	5.50%	All
		152) Media - VXA tape	5.50%	All
		153) Media - zip	5.50%	All
9)	Group 9 - Collaboration & IP Telephony	154) IP phones	4.25%	All
		155) Video conferencing products	4.25%	All
		156) Voice gateways / servers	4.25%	All
		157) Headsets	4.25%	All
		158) Audio conferencing products	4.25%	All
		159) Analog phones	4.25%	All
		160) Accessories	4.25%	All
10)	Group 10 - Other	161) Advanced Integration	3.00%	All
		162) Asset Disposal	3.00%	All
		163) Asset Management	3.00%	All
		164) Cables	15.00%	All
		165) Cables - custom	15.00%	All
		166) Cables - printer	15.00%	All
		167) Complex warranties	3.00%	All
		168) Desktop Accessories	6.75%	All
		169) Display Accessories	3.50%	All
		170) Electronic Services	3.00%	All
		171) Handheld Accessories	6.75%	All
		172) Imaging Accessories	6.75%	All
		173) Imaging - Camcorders	3.50%	All
		174) Imaging - Digital Cameras	3.50%	All
		175) Internal Lab Service	3.00%	All
		176) Lab fees	3.00%	All
		177) Managed Services	3.00%	All
		178) Miscellaneous solutions	3.00%	All
179) Mounting hardware for vehicles	2.50%	All		
180) Networking Warranties	3.50%	All		
181) Notebook Accessories	2.50%	All		
182) Notebook Batteries	5.00%	All		
183) PC Lab order services	3.00%	All		
184) POS Accessories	4.25%	All		

PRICING

	185) POS Displays	4.25%	All
	186) Power Accessories	5.00%	All
	187) Power Surge Protection	5.00%	All
	188) Power UPS	5.00%	All
	189) Server Accessories	4.00%	All
	190) Service Charge	2.00%	All
	191) System Components	13.00%	All
	192) Training Courses	3.00%	All
	193) Training Reference Manuals	3.00%	All
	194) Warranties - Electronic	3.00%	All
	195) iPad / Tablet Stylus	6.75%	All
	196) Mouse / Wrist Pads	6.75%	All
	197) Security Locks and Hardware	6.75%	All
	198) Tools	6.75%	All
	199) Document Scanner Accessories	3.00%	All
	200) Flatbed Scanners	3.00%	All
	201) Mobile Scanners	3.00%	All
	202) Network Scanners	3.00%	All
	203) Sheet fed Scanners	3.00%	All
	204) Wide Format Scanners	3.00%	All
	205) Workgroup / Department Scanner	3.00%	All
	206) Build to Order Desktops	2.10%	All
	207) Nettop	3.00%	All
	208) Point of Sale	4.25%	All
	209) Ultra Small Form Factor	2.10%	All
	210) Apple / Mac Memory Upgrades	13.00%	All
	211) Chips / SIMMs/SIPPs / ROMs	13.00%	All
	212) Computer Cases	13.00%	All
	213) CPUs / Fans	13.00%	All
	214) Memory Accessories	13.00%	All
	215) Motherboards / Chassis	13.00%	All
	216) 1 - 2 port Serial Boards	13.00%	All
	217) 3+ port Serial Boards	13.00%	All
	218) Console Server	4.00%	All
	219) Device Server	4.00%	All
	220) Terminal Server	4.00%	All
	221) Content Management	4.00%	All
	222) Firewall / VPN Appliances	5.50%	All

PRICING

	223) Multifunction Security Appliances	5.50%	All
	224) Network Camera Accessories	5.50%	All
	225) Network Cameras	5.50%	All
	226) Physical/Environmental Security	5.50%	All
	227) Security Appliance Accessories	5.50%	All
	228) Security Tokens	5.50%	All
	229) Unified Threat Management	5.50%	All
	230) 2-way Radios / Walkie Talkies	6.75%	All
	231) Apple Notebooks	2.50%	All
	232) Convertible PCs / Slate PCs / iPad	2.25%	All
	233) iPad	2.25%	All
	234) Slate Tablet Computers	2.25%	All
	235) GPS / PDA	6.75%	All
	236) Wireless Communication Devices	2.50%	All
	237) Batteries	5.00%	All
	238) Power Supplies / Adapters	5.00%	All
	239) Rackmount Equipment	5.00%	All
	240) Remote Power Management	5.00%	All
	241) Surge Suppressors	5.00%	All
	242) UPS / Battery Backup	5.00%	All
	243) 14" & smaller LCD Display	3.50%	All
	244) 15-19" LCD Display	3.50%	All
	245) 15-19" Wide LCD Display	3.50%	All
	246) 15-19" Wide LED Display	3.50%	All
	247) 20-30" LCD Display	3.50%	All
	248) 20-30" Wide LCD Display	3.50%	All
	249) 20-30" Wide LED Display	3.50%	All
	250) PCoIP and Zero Client Displays	3.50%	All
	251) Arm Mounts	3.50%	All
	252) Ceiling Mounts	3.50%	All
	253) Combo Mounts	3.50%	All
	254) Desktop Stands / Risers	3.50%	All
	255) Flat Wall Mounts	3.50%	All
	256) Mount Accessories	3.50%	All
	257) Pole Display	4.25%	All
	258) Stands / Carts / Feet	3.50%	All
	259) Tilt Wall Mounts	3.50%	All

PRICING

		260) C-Cure Products	4.00%	All
		261) Istar Products	5.50%	All
11)	Group 11 - Services	SERVICE	STANDARD HOURLY RATE	DISCOUNT FROM STANDARD RATE
		Design and Analysis	Please see CDW•G's Professional Services Offering below for descriptions of CDW•G's Professional Services.	
		Configuration		%
		Implementation		%
		Installation		%
		Training		%
		Maintenance & Support		%
		CDW Configuration Services		5%
12)	Group 12 - Additional Products/Services Not Identified	Please see CDW•G's Configuration Services Pricelist below for descriptions and pricing of CDW•G's Configuration Services.		
		Apple Products for eligible Government and Educational Entities	0.50%	

CDW•G has conformed to the National Pricing structure aligning to National IPA's product taxonomy, however, **CDW•G will manage the resultant contract according to CDW•G's Product Tree below, which shall govern all purchases and provides more breadth and a more complete representation of the CDW•G Catalog. All discounts will be applied by product category listed below to CDW•G's Nationally Advertised Pricing which is publicly verifiable at www.cdwg.com.**

CDW•G Product Tree Categories	Discount
Accessories	6.75%
Power, Cooling & Racks	5.00%
Desktop Computers	3.00%
PC Compatible Desktop Computer	2.10%
PC Compatible Workstation	3.00%
Blade PCs	3.00%
RISC Processor Workstation	3.00%
Thin Clients	3.00%
Web TV Access Unit	3.00%

PRICING

Windows Based Terminals	3.00%
Data Storage / Drives	5.50%
Enterprise Storage	5.00%
Point of Sale/Data Capture	4.25%
Servers & Server Management	4.00%
Services (CDW Delivered)	0.00%
Notebook/Mobile Devices	2.50%
Notebook Computers	2.10%
Notebook Accessories	2.50%
Wireless Communication Devices	2.50%
Convertible PCs/Slate PCs/iPAD	2.25%
Chromebooks	0.00%
Netcomm Products	5.50%
Gigabit Switch	6.00%
Modular Switch Chassis	6.00%
Modular Switches	5.50%
Carts and Furniture	5.00%
Printing & Document Scanning	3.00%
Services (3rd Party Delivered)	0.00%
Warranties-Product Protection	3.50%
Software	4.00%
Collaboration Hardware	4.25%
Memory/System Components	13.00%
Video-Projection-Pro Audio	3.50%
Cables	15.00%
CDW Configuration Services	5.00%
Apple Products for Eligible Entities	.50%

CDW•G will work with Manufacturers and the City or Participating Agencies, as applicable, post award to ensure they are aware of and participating in special manufacturer programs.

CDW•G Account Managers will work with the City or Participating Agencies, as applicable, post award to determine if large orders qualify to receive additional discounts. These discounts are dependent on order size, delivery schedule and will be negotiated with Manufacturers.

As Apple's largest Corporate Channel Partner in the U.S., CDW•G has negotiated to offer Apple Products to Eligible Government and Educational Entities at the discount listed above and in the pricing table in this Exhibit B.

PRICING

CDW•G Professional Services Offering			
Major Metro Service Areas			
Washington, DC New York City Metro Los Angeles San Francisco San Diego Boston Metro Chicago Federal Philadelphia Seattle	Raleigh Houston Tampa Atlanta National Dallas Cincinnati Detroit Minneapolis St. Louis/KC Denver Nashville Portland	Madison Wausau Milwaukee Appleton Grand Rapids Indianapolis Cleveland	
<p>Services apply to both CDW•G executed professional services and services which are sub-contracted through a CDW•G authorized third party provider. Hourly or fixed rates will be negotiated based on the customer, geography, scope of the professional service engagement, and level of engineer required to perform the service. CDW•G will create a Statement of Work (SOW) detailing the exact scoping and pricing of the Services to be provided, which will be executed by CDW•G and the National IPA member prior to the start of Services. Sample SOW is included in our proposal. Expenses (T and E) may be an additional consideration depending on project specifics.</p>			
Solution Domain	Discipline	Technology Domain	Role
Datacenter	Storage	Data Migration	Senior Consulting Engineer
		EMC	Senior Consulting Engineer
		IBM	Senior Consulting Engineer
		VMWare	Senior Consulting Engineer
		NetApp	Senior Consulting Engineer
Datacenter	Networking & Enterprise Networking	Infrastructure & Networking	Associate Consulting Engineer
			Consulting Engineer
			Senior Consulting Engineer
			Principal Consulting Engineer
Mobility	Client Management	Client Virtualization Endpoint Management Mobile Device Management	Associate Consulting Engineer
			Consulting Engineer
			Senior Consulting Engineer
			Principal Consulting Engineer
	Technical Lead		
	VDI	Citrix	Senior Consulting Engineer
Security	Network Security	Network Security	Associate Consulting Engineer
			Consulting Engineer
			Senior Consulting Engineer
			Principal Consulting Engineer
			Technical Lead

PRICING

Security	Information Security	Information Security	Penetration Testing
			Gap Analysis (HIPAA gap, PCI Gap, NIST)
Collaboration	Communication	Voice, Video Collaboration	Associate Consulting Engineer
			Consulting Engineer
			Senior Consulting Engineer
			Principal Consulting Engineer
			Technical Lead
Collaboration	Engagement	Contact Center	Associate Consulting Engineer
			Consulting Engineer
			Senior Consulting Engineer
			Principal Consulting Engineer
Collaboration	Productivity	Information Worker	Associate Consulting Engineer
			Consulting Engineer
			Senior Consulting Engineer
			Principal Consulting Engineer
Consulting Advisory Services	Consulting Advisory Services	Consulting Advisory Services	Technical Lead
			CAS_Business_Analyst
			CAS_Consulting_Services_Architect
			CAS_Engagement_Manager
			CAS_Technology_Architect
Project & Program Management	Project & Program Management	Project & Program Management	CAS_Business_Architect
			Project Admin
			Project Manager
			Senior Project Manager
			Program Manager

CDW•G Configuration Services

Service Group	EDC	Description	Advertised Price	Contract Discount	Contract Ceiling Price
Hardware Configurations and Priority Service					
Priority	1625768	PRIORITY SERVICE	\$ 21.99	5%	\$ 20.89
Hardware	1706188	CDW Hardware Install for Server	\$ 32.99	5%	\$ 31.34
Hardware	1706189	CDW Hardware Install for DT-LT	\$ 17.99	5%	\$ 17.09
Hardware	1820627	CDW Hardware Install for Netcom	\$ 22.99	5%	\$ 21.84
Hardware	3558560	CDW MOBILE DEVICE SIM CARD INSTALL	\$ 9.99	5%	\$ 9.49
Hardware	2437037	CDW RACK CONFIG 1 CREDIT	\$ 82.99	5%	\$ 78.84
Hardware	3803338	CDW HARDWARE INSTALL FOR PRINTER	\$ 32.99	5%	\$ 31.34
Asset Tagging					
Asset Tags	322170	CDW ASSET TAGS NO INSTALL MAIL ONLY	\$ 0.98	5%	\$ 0.93
Asset Tags	338519	CDW ASSET TAG W/O INSTALL	\$ 9.99	5%	\$ 9.49
Asset Tags	338521	CUSTOMER ASSET TAG CONFIG SERVICE	\$ 9.99	5%	\$ 9.49
Asset Tags	500814	CDW CREATE CUSTOM TAG/LABEL	\$ 29.99	5%	\$ 28.49
Asset Tags	500815	BASIC CUSTOM TAG	\$ 9.99	5%	\$ 9.49
Asset Tags	500817	INTERMEDIATE CUSTOM TAG	\$ 17.99	5%	\$ 17.09

PRICING

Asset Tags	500818	ADVANCED CUSTOM TAG	\$ 22.99	5%	\$ 21.84
Asset Tags	537315	CDW CREATED CUSTOM TAG – MAIL ONLY	\$ 1.22	5%	\$ 1.16
Asset Tags	955862	CDWG UID TAG/LABEL	\$ 9.99	5%	\$ 9.49
Asset Tags	1095109	CDW RFID TAG	\$ 61.99	5%	\$ 58.89
Asset Tags	3465262	BASIC CUSTOM TAG W/BOX DUP TAG	\$ 10.99	5%	\$ 10.44
Asset Tags	3465269	CUSTOMER ASSET TAG W/BOX DUP REQ6330	\$ 10.99	5%	\$ 10.44
Asset Tags	4347185	CUSTOMER ASSET TAG W BOX DUP REQ6247	\$ 12.99	5%	\$ 12.34
Asset Tags	3465895	INTERMEDIATE CUSTM TAG W-BOX DUP TAG	\$ 21.99	5%	\$ 20.89
Asset Tags	3982815	ADV CUSTOM TAG W/BOX DUP	\$ 24.99	5%	\$ 23.74
Configuration Service Bundles					
Bundle	2342089	CDW HW IMAGE CDW ASSET TAG-REQ1173	\$ 45.99	5%	\$ 43.69
Bundle	2342092	CDW HW IMAGE BASIC CUSTM TAG-REQ1174	\$ 52.99	5%	\$ 50.34
Bundle	2342096	CDW HW IMAG CUSTMR ASSET TAG-REQ1175	\$ 52.99	5%	\$ 50.34
Bundle	2342098	CDW IMAG CSTMR ASSET TAG PRI-REQ1176	\$ 46.99	5%	\$ 44.64
Bundle	2342102	CDW IMAGE CDW ASSET TAG PRI-REQ1177	\$ 39.99	5%	\$ 37.99
Bundle	2342106	CDW HW IMAGE PRIORITY-REQ1178	\$ 53.99	5%	\$ 51.29
Bundle	2423730	CDW HW IMAGE CDW ASSET PRI-REQ1193	\$ 53.99	5%	\$ 51.29
Bundle	2423732	CDW HW IMG BSC CSTM TAG PRI-REQ1194	\$ 59.99	5%	\$ 56.99
Bundle	2423734	CDW HW IMAG CUSTMR ASSET PRI-REQ1195	\$ 59.99	5%	\$ 56.99
Bundle	2426793	CDW IMAGE CUSTMER ASSET TAG-REQ1197	\$ 39.99	5%	\$ 37.99
Bundle	2426795	CDW IMAGE CDW ASSET TAG-REQ1198	\$ 32.99	5%	\$ 31.34
Bundle	2426798	CDW HARDWARE IMAGE DEPLOY-REQ1199	\$ 45.99	5%	\$ 43.69
Bundle	2853723	CDW IMAGE BASIC CUSTOM TAG-REQ1324	\$ 39.99	5%	\$ 37.99
Bundle	2853726	CDW IMAGE BIOS CUSTOMIZATION-REQ1325	\$ 39.99	5%	\$ 37.99
Bundle	3269810	CDW HW IMG INTRM TAG CMPTRAC REQ1901	\$ 63.99	5%	\$ 60.79
Bundle	3327808	CDW LIGHT TOUCH IMAGE DEPLOY W-VPN	\$ 42.99	5%	\$ 40.84
Bundle	4008018	LEVEL 1 IOS\ETCH INSERT REQ 5075	\$ 39.99	5%	\$ 37.99
Bundle	4008025	LEVEL 1 IOS\ETCH REQ 5076	\$ 33.99	5%	\$ 32.29
Bundle	4041681	IOS LVL1 & SRVC CUST INSERT REQ5156	\$ 28.99	5%	\$ 27.54
Bundle	4056755	INT CUST TAG&DUP + DATA CAP CONTRACT	\$ 21.99	5%	\$ 20.89
Bundle	4086733	CDW LT IMAGE DEPLOY W/VPN&BOX LABEL	\$ 44.99	5%	\$ 42.74
Bundle	4171085	COI SPECOPS & PROJECTMANGEMENT R5611	\$ 569.99	5%	\$ 541.49
Diagnostics					
Diagnostics	214266	CDW BURN IN 12 HOURS	\$ 21.99	5%	\$ 20.89
Imaging					
Imaging	195856	CDW INSTALLING CUSTOM SERVER IMAGE	\$ 113.99	5%	\$ 108.29
Imaging	247489	HILL ROM CREATE CUSTOM RESTORE CD	\$ 49.99	5%	\$ 47.49
Imaging	266912	CDW APPLE IMAGE DEPLOYMENT	\$ 32.99	5%	\$ 31.34
Imaging	283926	CDW MASTER IMAGE CREATION CREDIT	\$ 183.99	5%	\$ 174.79
Imaging	379370	CDW INSTALLING CUSTOM PDA IMAGE	\$ 17.99	5%	\$ 17.09
Imaging	534223	CDW STANDARD IMAGE DEPLOYMENT DT/NB	\$ 32.99	5%	\$ 31.34
Imaging	763587	FLASH DRIVE IMAGING	\$ 9.99	5%	\$ 9.49
Imaging	763593	CDW USB RESTORE UPTO 16GB	\$ 39.99	5%	\$ 37.99
Imaging	809048	CDW MAINTAIN CUSTOM PC IMAGE-CREDIT	\$ 31.99	5%	\$ 30.39
Imaging	1640342	CDW INSTALLING ALTIRIS SERVER IMAGE	\$ 113.99	5%	\$ 108.29
Imaging	1926223	CDW TERMINAL IMAGE DEPLOYMENT	\$ 32.99	5%	\$ 31.34
Imaging	2691836	CDW ZERO TOUCH IMAGE DEPLOYMENT	\$ 32.99	5%	\$ 31.34
Imaging	2798606	CDW IMAGE MODEL MIGRATION CREDIT	\$ 113.99	5%	\$ 108.29

PRICING

Imaging	2869570	CDW USB RESTORE UPTO 32GB	\$ 52.99	5%	\$ 50.34
Imaging	3652393	CDW CREATE CUSTOM RECOVERY PARTITION	\$ 353.99	5%	\$ 336.29
Imaging	3765107	SERVER RACKING ADV IMAGING SVC	\$ 219.99	5%	\$ 208.99
Imaging	3982809	CDW USB RESTORE SVC UPTO 64GB	\$ 63.99	5%	\$ 60.79
Imaging	4008336	CHROME WHITE GLOVE SERVICE TIER1	\$ 22.93	5%	\$ 21.78
Imaging	4008354	CHROME WHITE GLOVE SERVICE TIER2	\$ 24.93	5%	\$ 23.68
Imaging	4419882	CHROME UNMANAGED KIOSK APP INSTALL	\$ 28.92	5%	\$ 27.47
Imaging	4086723	CDW IMAGE DEPLOY W BOX LABEL REQ6281	\$ 33.99	5%	\$ 32.29
Imaging	4086738	CDW SCCM SRV-ZERO TOUCH W/BOX LABEL	\$ 33.99	5%	\$ 32.29
Laser Etching / Color Branding					
Laser Etching	1461344	CDW LASER ETCHING-TIER 1 STATIC SML	\$ 11.00	5%	\$ 10.45
Laser Etching	2815190	CDW LASER ETCHING-TIER 2 STATIC LRG	\$ 15.00	5%	\$ 14.25
Laser Etching	2815191	CDW LASER ETCHING-TIER 3 DYNAMIC	\$ 22.00	5%	\$ 20.90
Color Branding	3223260	CDW COLOR BRANDING TEMPLATE	\$ -	5%	\$ -
Color Branding	4100630	CDW COLOR BRANDING TIER 1	\$ 15.00	5%	\$ 14.25
Color Branding	3223250	CDW COLOR BRANDING TIER 2	\$ 22.00	5%	\$ 20.90
Color Branding	3436605	CDW COLOR BRANDING TIER 3	\$ 30.00	5%	\$ 28.50
Mobile Carts					
Mobile Carts	4466480	CDW CHROMEBOOK WIRE CART CONFIG	\$ 120.00	5%	\$ 114.00
Netcom					
Netcom	311718	CDW NETWORK & SECURITY DEVICE CONFIG	\$ 40.00	5%	\$ 38.00
Netcom	1550455	CDW NETWORK & SEC CHASSIS CONFIG BUN	\$ 100.00	5%	\$ 95.00
Netcom	1550460	CDW NETWORK & SEC DEVICE CONFIG BUN	\$ 65.00	5%	\$ 61.75
Netcom	2394839	CDW NETWORK & SEC CHASSIS CONFIG	\$ 70.00	5%	\$ 66.50
Netcom	2432019	CDW VPN DOMAIN JOIN ONLY	\$ 8.00	5%	\$ 7.60
Netcom	3628500	CDW VPN DOMAIN JOIN ONLY-PCA	\$ 8.00	5%	\$ 7.60
Netcom	3651585	CDW AP/ENDPOINT PROVISIONING	\$ 30.00	5%	\$ 28.50
Netcom	4121801	CDW AP/ENDPOINT FIRMWARE UPDATE	\$ 16.00	5%	\$ 15.20
Netcom	4219966	CDW CLIENT VPN CONFIGURATION	\$ 12.00	5%	\$ 11.40
Other					
Other	504311	CDW HP ILO ACTIVATION	\$ 12.00	5%	\$ 11.40
Other	872360	CDW SYSTEM BIOS/FIRMWARE UPG	\$ 16.00	5%	\$ 15.20
Other	1197175	CDW CUSTOM IP CONFIGURATION	\$ 12.00	5%	\$ 11.40
Other	1197180	CDW BIOS CUSTOMIZATION	\$ 5.00	5%	\$ 4.75
Other	1369901	CDW SRVC CUSTOM ADDED INSERTS	\$ 5.00	5%	\$ 4.75
Other	1369904	CDW DDS / COMPUTRACE ACTIVATION	\$ 5.00	5%	\$ 4.75
Other	1369905	CDW DATA CAPTURE & TRACKING SRVC	\$ 5.00	5%	\$ 4.75
Other	1713539	CDW SPECIAL CONFIG REQ - 1 CREDIT	\$ 5.00	5%	\$ 4.75
Other	1713542	CDW SPECIAL CONFIG REQ - 6 CREDITS	\$ 30.00	5%	\$ 28.50
Other	1713544	CDW SPECIAL CONFIG REQ - 12 CREDITS	\$ 60.00	5%	\$ 57.00
Other	2366694	CDW APPLE IOS CUSTOMIZATION LVL 1	\$ 15.00	5%	\$ 14.25
Other	2366709	CDW APPLE IOS CUSTOMIZATION LVL 2	\$ 30.00	5%	\$ 28.50
Other	2613286	CDW ANDROID CUSTOMIZATION LVL 1	\$ 15.00	5%	\$ 14.25
Other	2613287	CDW ANDROID CUSTOMIZATION LVL 2	\$ 30.00	5%	\$ 28.50
Other	2671476	CDW SCREEN OVERLAY INSTALL SERVICE	\$ 8.00	5%	\$ 7.60
Other	2696504	CDW Hard Drive Data Encryption DT/NB	\$ 12.00	5%	\$ 11.40
Other	2828923	CDW SAS RAID Activation	\$ 12.00	5%	\$ 11.40
Other	2858009	CDW KINDLE AD REMOVAL REQ1329	\$ 30.00	5%	\$ 28.50

PRICING

Other	3553290	CDW APPLE ID CREATION	\$ 5.00	5%	\$ 4.75
Other	3899153	CDW VPRO BASIC ACTIVATION REQ4717	\$ 5.00	5%	\$ 4.75
Other	4248044	CDW LENOVO IMM ACTIVATION	\$ 12.00	5%	\$ 11.40
Other	4176320	CDW ASSET MGMNT UPDATE SVC REQ 5634	\$ 1.25	5%	\$ 1.19
Software					
Software	76056	CDW APPLICATION INSTALL DT/NB	\$ 36.00	5%	\$ 34.20
Software	76980	CDW NETWORK OPERATING SYSTEM INSTALL	\$ 200.00	5%	\$ 190.00
Software	346243	CDW STD WINDOWS CLIENT OS INSTALL	\$ 90.00	5%	\$ 85.50
Software	931000	CDW NETWORK APPLICATION INSTALL	\$ 100.00	5%	\$ 95.00
Software	1197183	CDW APPLICATION UPDATES AND MAINTENANCE	\$ 22.00	5%	\$ 20.90
Software	1278296	CDW OEM MFG OS INSTALLATION	\$ 90.00	5%	\$ 85.50
Software	1291101	CDW LINUX INSTALLATION OS-ALL VERS	\$ 120.00	5%	\$ 114.00
Software	1550439	SUN SOLARIS INSTALLATION – ALL VERSIONS	\$ 200.00	5%	\$ 190.00
Software	1550447	VMWARE INSTALLATION – ALL VERSIONS	\$ 70.00	5%	\$ 66.50
Software	3803347	CDW SOFTWARE CONFIG FOR PRINTER	\$ 24.00	5%	\$ 22.80
Software	3982800	CDW HDD OS SWAP SVC REQ5012	\$ 36.00	5%	\$ 34.20
Configuration Project Management / COI					
Proj. Mgmt	3110955	CDW CONFIG PROJECT COORD HRLY CREDIT	\$ 75.00	5%	\$ 71.25
Proj. Mgmt	4289890	CDW CONFIG PM 150 HRLY CHARGE	\$ 150.00	5%	\$ 142.50
Proj. Mgmt	3536706	CDW COI PROJ COORD /OPS COST	\$ 5,000.00	5%	\$ 4,750.00
Proj. Mgmt	3543509	CDW CONFIG PROJECT COORD CREDIT/UNIT	\$ 5.00	5%	\$ 4.75
Proj. Mgmt	3752290	CDW PROJ MNGMNT CONFIG AP SVC	\$ 7.00	5%	\$ 6.65
Proj. Mgmt	4086747	CONFIGS SERVICES PROJ MGMT(PER UNIT)	\$ 1.00	5%	\$ 0.95
Proj. Mgmt	4087191	CONFIGS SERVICES PROJ MGMT(PER UNIT)	\$ 0.50	5%	\$ 0.48
COI	3268855	CDW CONFIG PROJECT COORD COI SVC	\$ 300.00	5%	\$ 285.00
COI	3561536	COI OPS PALLET RECEIVING/PROCESSING	\$ 480.00	5%	\$ 456.00
COI	4439488	COI OPS PALLET/MONTH REC/PRO	\$ 40.00	5%	\$ 38.00
COI	3659769	CDW COI OPERATIONAL EXPENSE WITH SN	\$ 10.00	5%	\$ 9.50
COI	3827583	COI TEMP TAG NO INSTALL E-MAIL	\$ 10.00	5%	\$ 9.50

MOVIES

'Flatliners' stars ponder what happens when we die

Bryan Alexander
USA TODAY

Flatliners is asking the ultimate question again.

Ellen Page, Diego Luna, Nina Dobrev, Kiersey Clemons and James Norton star as medical students who experiment with monitored near-death experiences to find out what happens in the moments after we die.

The movie (in theaters Friday) is a remake of the 1990 sci-fi/horror film with Julia Roberts, Kiefer Sutherland and Kevin Bacon.

We asked the cast what they believe happens once we shake off this mortal coil.

DIEGO LUNA BELIEVES IN 'THE FORCE'

Luna, 37, died heroically onscreen

as *Cassian Andor* in *Rogue One: A Star Wars Story*.

"When I had my (two) kids, it came back to me — this need to believe that I am somehow going to still be part of their lives. Not in this form, but in some other.

"I'm not religious, but I think we're part of something bigger, a little dot in a gigantic painting. I believe we become part of this energy. My philosophy is shaped some by *Star Wars*. Definitely. The idea of 'The Force' is something I really fancy — being part of the energy of those you love in a different way."

NINA DOBREV LIKES THE IDEA OF SECOND CHANCES

The 'Vampire Diaries' star, 28, hopes to be back.

"I'd like to believe in reincarnation. That we're on this Earth to accomplish something, and that if



Medical students Jamie (James Norton) and Ray (Diego Luna) prepare as Courtney (Ellen Page) braces for death in the remake of *Flatliners*, in theaters Friday. *USA TODAY*

we don't manage to do so, hopefully we get another chance to come back and fulfill our destiny. But who knows? I've concluded that we're not meant to know one of the few mysteries left in life."

MICHAEL DOUGLAS HAS HEARD THE ANGELS SING

Actor Douglas, 73, who produced both 'Flatliners' movies, has firsthand experience.

"I almost drowned while at-

tending college in California. I did hear angels singing, saw a white light and then relaxation came over me as I faced death. I'm not a believer in the afterlife, but I do think we have a mechanism in our brain that takes over and makes it easier to accept the inevitable during the process of dying."

KIERSEY CLEMONS DOUBTS GRANDMA SAW THE LIGHT

The 'Justice League' star, 23, has wondered her entire life.

"I'm pretty religious, so I've spent my whole life kind of thinking about what happens when we die. My grandma saw the light when she was my age. She's been telling that story forever. ... She's always talking about 'the light.' So in my mind, I kind of based (the movie portrayal) on that's what happens when you die."

To view more Classified listings, visit: www.classifieds.usatoday.com

MARKETPLACE TODAY

For advertising information: 1.800.397.0070 www.russeljohns.com/usat

NOTICES

PUBLIC NOTICE

The City of Mesa, AZ is requesting proposals from qualified and experienced firms to provide Information Technology Solutions (RFP No. 2016011). In order to be considered, the Offeror must complete and submit a proposal to the City of Mesa, AZ in accordance with the solicitation documentation available at <http://www.mesaaz.gov/business/purchasing> or from the Procurement Services office.

PRE-PROPOSAL CONFERENCE:

Tuesday, October 3, 2017, 10:00 am local Arizona time, City of Mesa — Mesa City Plaza, 20 E. Main Street, Conf. Rm. 450 South, Mesa, AZ 85201

PROPOSAL DUE DATE:

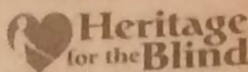
Monday, October 23, 2017, Before 3:00 PM Local Arizona Time. CONTACT: Cyndi Gonzales Cyndi.Gonzales@MesaAZ.gov

IN SEARCH OF

Imagine The Difference You Can Make
DONATE YOUR CAR
1-888-981-4942

FREE TOWING
TAX DEDUCTIBLE

Help Prevent Blindness
Get A Vision Screening Annually



Ask About A FREE 3 Day Vacation Voucher To Over 30 Destinations!!

PUBLIC NOTICE

TALCUM POWDER WARNING

Users of Johnson and Johnson's Baby Powder and Shower to Shower may be at a higher risk of developing ovarian cancer. If you or a loved one used talcum powder and were diagnosed with ovarian

BUSINESS

BUSINESS OPPORTUNITIES

Do You Need An Angel Investor?
Need an Investing Partner?
Brokers Protected
www.angelinvestorsrus.com
203-470-4748

BUSINESS OPPORTUNITIES

Recent hurricanes have increased sales dramatically. We need help helping the hurricane victims, manufacturer looking for someone to purchase its accounts receivable at a 20% discount. You can buy 1 invoice or as many as you can afford. ph: 215-256-7318 or email: sales@vpowerenergy.com

FINANCIAL SERVICES

FORECLOSURE DEFENSE HELPLINE

ARE YOU BEHIND ON YOUR MORTGAGE PAYMENTS? COULD YOUR HOUSE GO INTO FORECLOSURE? DOES IT SEEM LIKE THE BANK HAS NO INTEREST IN HELPING YOU SAVE YOUR HOME AND YOU FEEL LIKE YOU HAVE NOWHERE TO TURN? THE FORECLOSURE DEFENSE HELPLINE CAN HELP SAVE YOUR HOME. IT'S CRITICAL THAT YOU CALL US RIGHT NOW AT: **800-509-1635**

MARKETPLACE

HEALTH / FITNESS

VIAGRA
Cialis LEVITRA
STAXYN · PROPECIA & MORE

• FDA-Approved Medications
• U.S. Licensed Pharmacies

VIAMEDIC
SAFE · SECURE · DISCREET

OVERNIGHT SHIPPING AVAILABLE
800-551-0352
VIAMEDIC.COM

Covered by MEDICARE and suffering from BACK or KNEE PAIN?

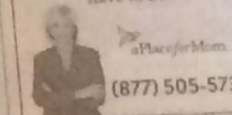


RELIEVE YOUR PAIN NOW!

REAL ESTATE

ACTIVE LIFESTYLE COMMUNITY

Finding Senior Housing can be complex, but it doesn't have to be.



(877) 505-5739

NOTICES

PUBLIC NOTICE

MISSING

TAHJINAE SMITH



DOB: Jan 14, 2000
Missing: Jul 9, 2016
Age Now: 17
Sex: Female
Race: Black
Hair: Brown
Eyes: Brown