



LAKE COUNTY FOREST PRESERVES
www.LCFPD.org

Preservation, Restoration, Education and Recreation

DATE: October 6, 2016

MEMO TO: S. Michael Rummel, Chair
Finance and Administrative Committee

FROM: James L. Anderson
Director of Natural Resources

RECOMMENDATION: Approve the reduction of the existing Farm License Agreements at Prairie Stream (includes a small portion of Dutch Gap), Pine Dunes and Kettle Grove Forest Preserves.

STRATEGIC DIRECTION SUPPORTED: Conservation

FINANCIAL DATA: Removal of 2.2 acres from the farm program will reduce annual revenue generated by the Pine Dunes – Ben Ley Farm License from \$10,235.12 (59.68 acres at \$171.50/acre) to \$9,857.82 (57.48 acres at \$171.50/acre); a loss of \$377.30 annually.

Removal of 6.77 acres from the farm program will reduce annual revenue generated by the Prairie Stream Farm License from \$51,151.71 (215.83 acres at \$237.00/acre) to \$49,547.22 (209.06 acres at \$237.00/acre); a loss of \$1,604.49 annually.

Removal of 13.52 acres from the farm program will reduce annual revenue generated by the Kettle Grove Farm License from \$23,141.63 (131.3 acres at \$176.25/acre) to \$20,758.73 (117.78 acres at \$176.25/acre); a loss of \$2,382.90 annually.

In total, the above reductions will reduce Farm License acreage by 22.49 acres and annual revenue by \$4,364.69.

BACKGROUND: The farming program is conducted with local farmers to provide cost-effective, interim land use and management until the District is ready to convert farmland to other forest preserve purposes.

In 2015, the District partnered with Lake County Stormwater Management Commission (SMC) for an Illinois EPA Section 319 Grant (Clean Water Act). SMC and District staff inspected several farm parcels in the North Mill Creek/Dutch Gap Watershed to find potential erosional areas that may create impacts to water quality within the watershed. Five project locations were selected to implement Best Management Practices aimed at reducing non-point source pollution. Best Management Practices include installation of grass waterways, field border strips, and rock check dams as well as the repair of a broken drain tile that has created a large sink hole. Estimated pollutant reductions total over 605 tons of sediment, 740 tons of phosphorus, and 1513 tons of nitrogen annually by implementing these practices. Permanent retirement of farm land in these locations is necessary to implement this project.

Also in 2015, the District began habitat restoration efforts at Kettle Grove Forest Preserve. Most of the habitat restoration has taken place on the preserve's western portions. Access to this restoration area is limited from the north, west, and south, by private lands and roadways. Access for current and future restoration efforts can only come from the east through an existing farm field. Permanent retirement of the proposed area will link current and future restoration areas as well as provide access to all areas.

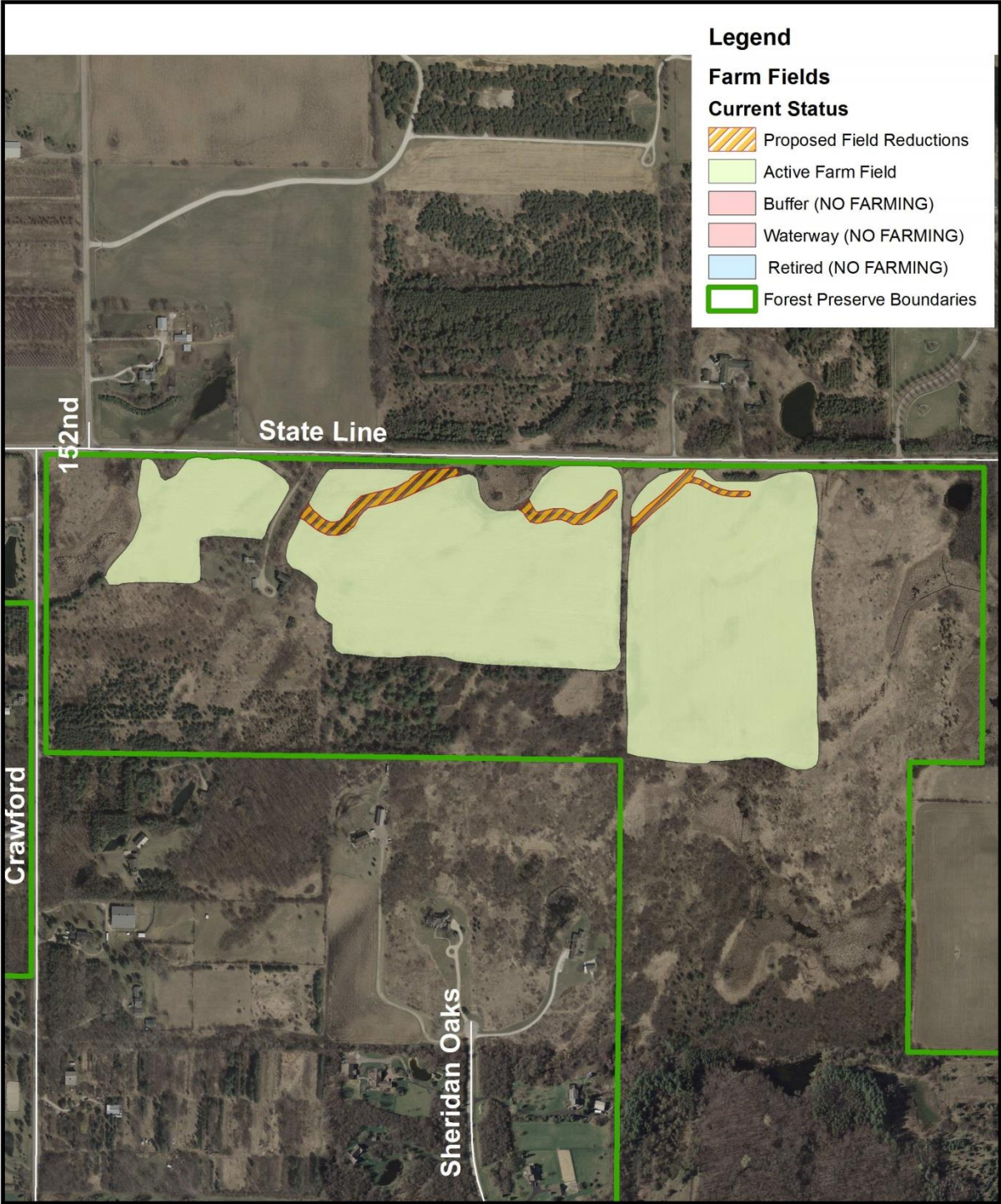
REVIEW BY OTHERS: Executive Director, Chief Operations Officer, Director of Finance

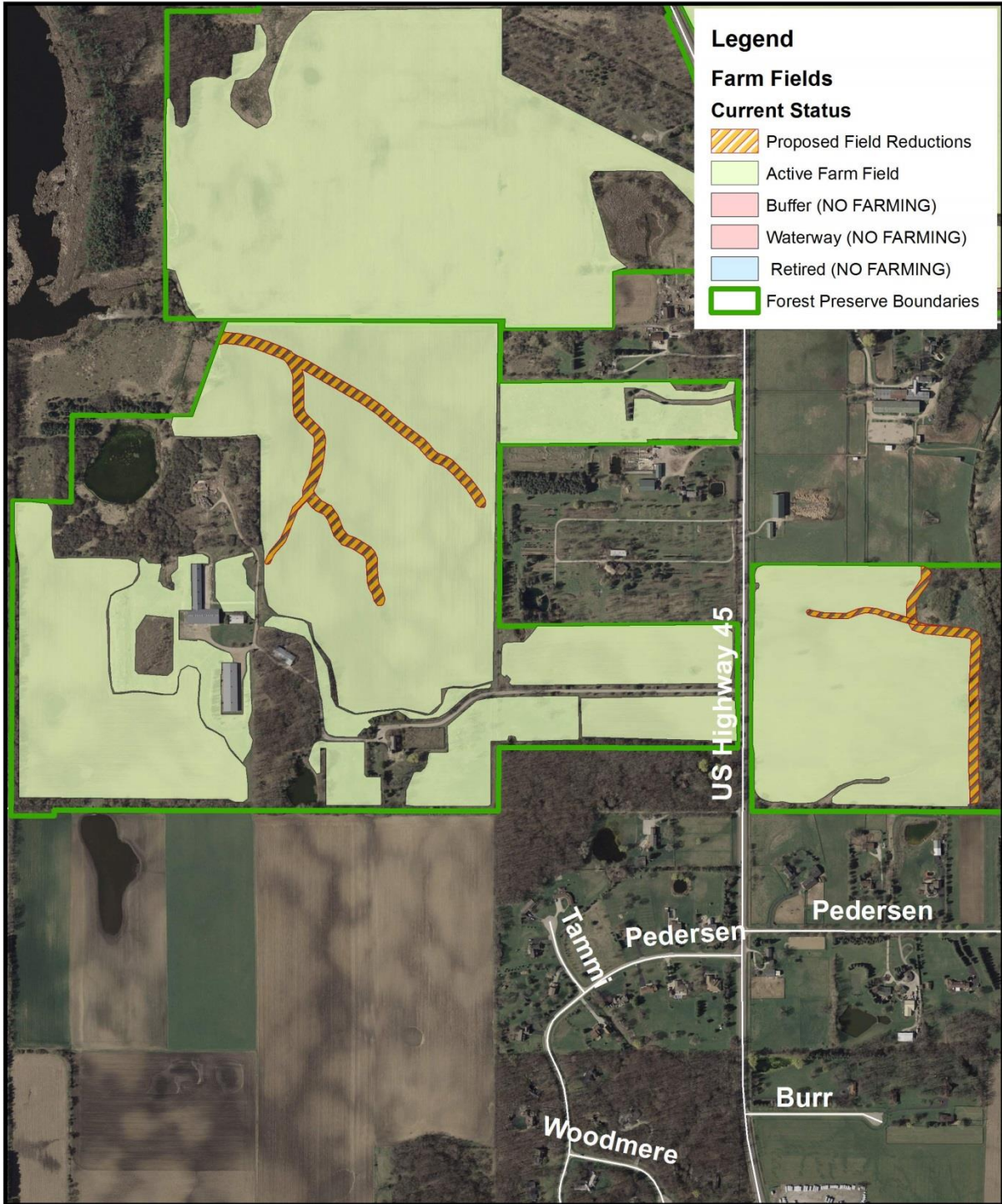
PRESENTER: James L. Anderson

APPROVED:

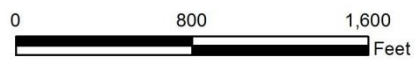
FINANCE AND ADMINISTRATIVE COMMITTEE

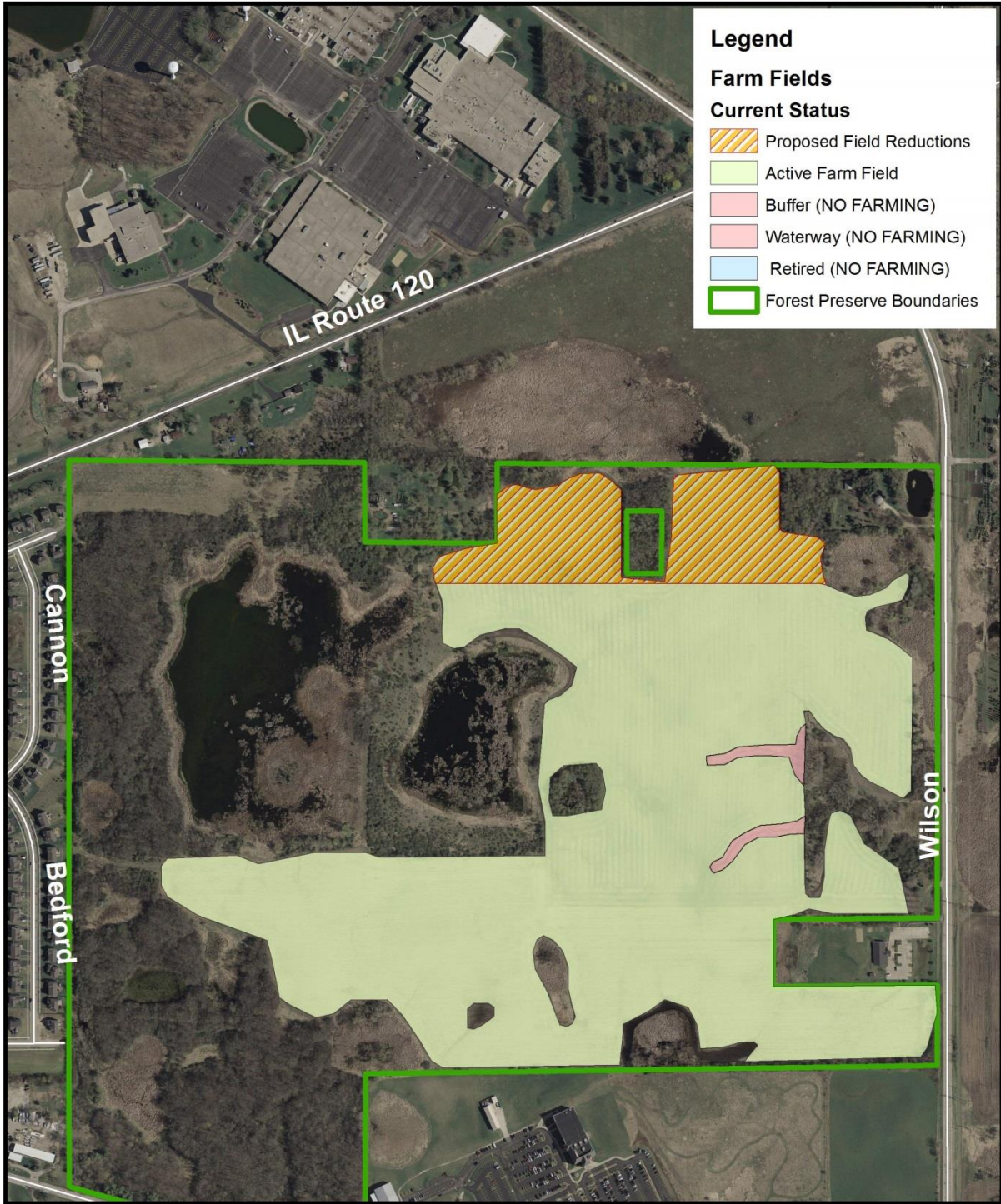
Date: _____ Roll Call Vote: Ayes: ____ Nays: _____
 Voice Vote Majority Ayes; Nays: _____





Lake County Forest Preserves; Farm Program
 Prairie Stream (and Dutch Gap) Forest Preserve
 Prairie Stream Farm License Reduction





Lake County Forest Preserves; Farm Program
 Kettle Grove Forest Preserve
 Kettle Grove Farm License Reduction

