



LAKE COUNTY FOREST PRESERVES
www.LCFPD.org

Preservation, Restoration, Education and Recreation

DATE: August 4, 2016

MEMO TO: S. Michael Rummel, Chair
Finance and Administrative Committee

FROM: James L. Anderson
Director of Natural Resources

RECOMMENDATION: Approve reduction of the existing Farm License Agreement at Pine Dunes Forest Preserve.

STRATEGIC DIRECTION SUPPORTED: Conservation

FINANCIAL DATA: Removal of 4.79 acres from the farm program will reduce annual revenue generated by the Pine Dunes - East Farm License from \$3,886.06 (41.5 acres at \$93.64/acre) to \$3,437.52 (36.71 acres at \$93.64/acre); a loss of \$448.54 annually.

BACKGROUND: The farming program is conducted with local farmers to provide cost-effective, interim land use and management until the District is ready to convert farmland to other forest preserve purposes.

The recent Pine Dunes – SMD acquisition parcel was farmed prior to District acquisition. Due to the subdivision of the parcels, delayed sale of the second parcel, and recent improvements (District trail, entrance, boardwalk and new ComEd power lines/transformer box) installed on the first parcel, portions of the historically farmed areas are now inaccessible to farm equipment. Rather than crossing a stream with farm equipment, staff recommends permanent retirement of the northern portion of the License area.

REASON FOR RECOMMENDATION: Committee approval is required in accordance with District Policy.

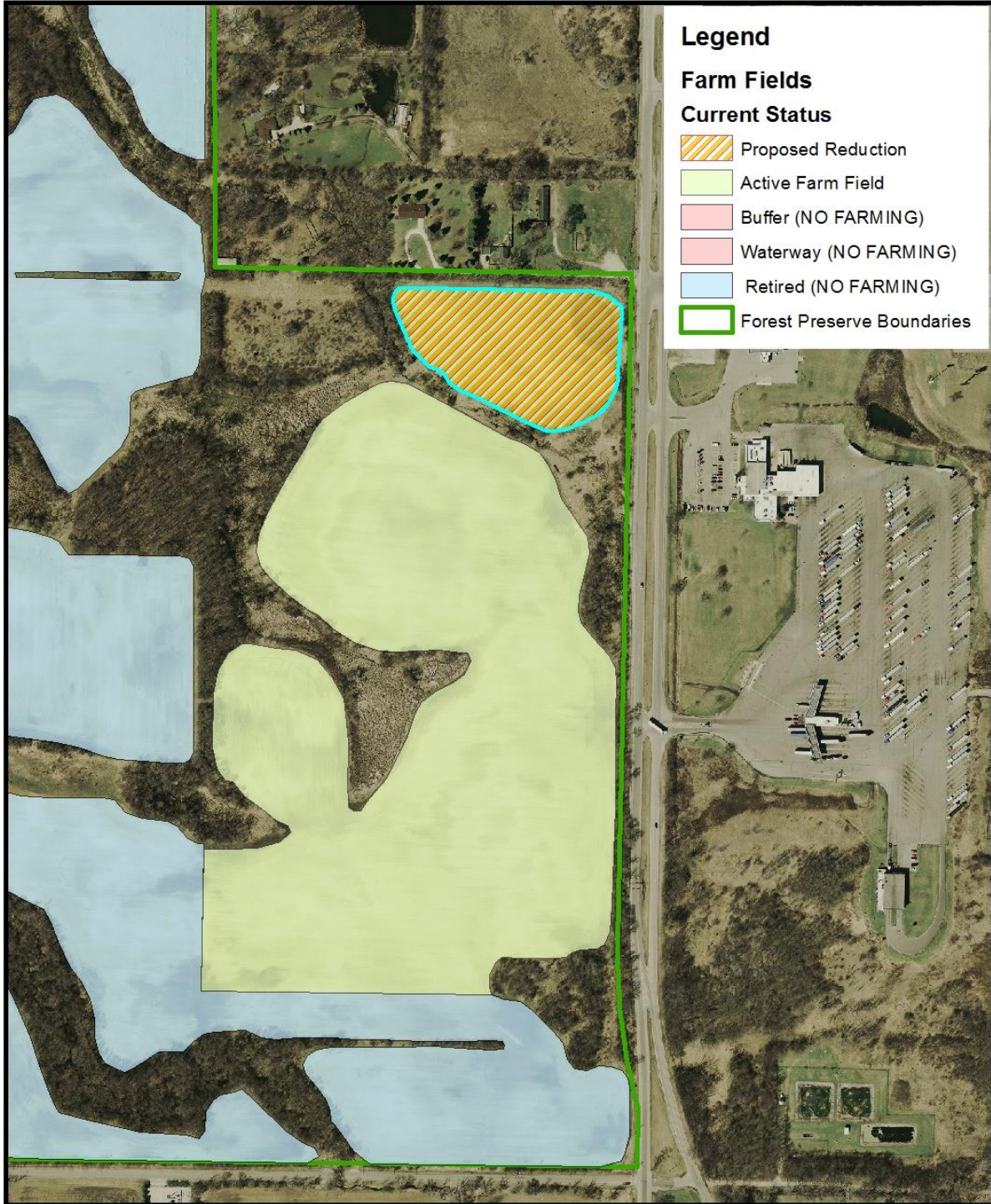
REVIEW BY OTHERS: Director of Finance, Chief Operations Officer, Executive Director

PRESENTER: James L. Anderson

APPROVED:

Date: _____ Roll Call Vote: Ayes: ____ Nays: _____

Voice Vote Majority Ayes; Nays: _____



Legend

Farm Fields

Current Status

-  Proposed Reduction
-  Active Farm Field
-  Buffer (NO FARMING)
-  Waterway (NO FARMING)
-  Retired (NO FARMING)
-  Forest Preserve Boundaries



Lake County Forest Preserves; Farm Program
 Proposed Reduction to Pine Dunes - East Farm License

