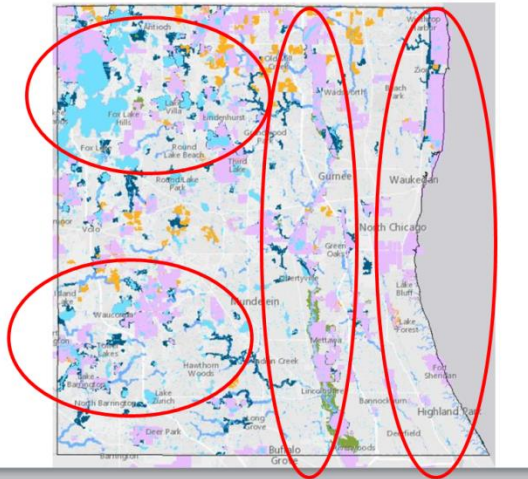




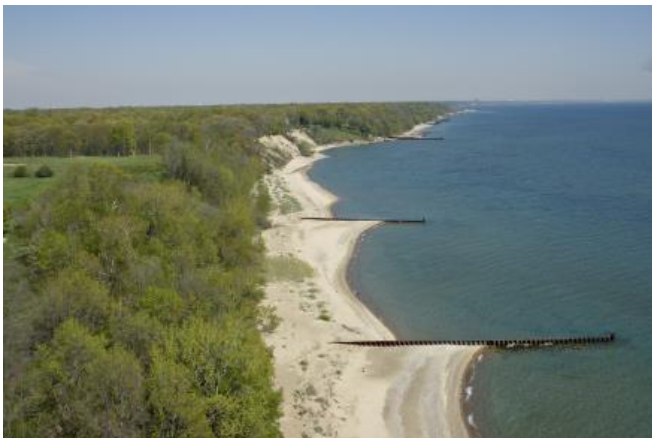
Natural Resource Department
April 2016 – PROGRESS REPORT

Green Infrastructure Model and Strategy

A work session with the Committee of the Whole and Lake County Partners was led by the Conservation Fund and District staff on February 4th. Commissioners and Partners identified potential locations for three to five 10,000-acre ecological complexes. The GIV Advisory Group has looked at the results of the workshop and, along with work by the Conservation Fund, the District is moving toward completion. Portions of the project include potential land acquisition, so it will be presented to the Land Preservation and Acquisition Committee for review, and then to the rest of the standing committees or Board this summer.



Fort Sheridan Great Lakes Fish and Ecosystem Restoration Program

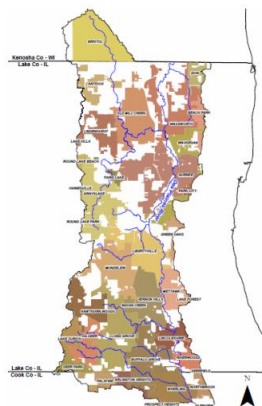


Habitat restoration of the bluffs and ravines is being conducted by Conservation Land Stewardship (Davey Resource Group) and will proceed to May 2016.

Clearing of trees began in Janes and Hutchinson Ravines the first part of February and is continuing. John Keno and Sons have begun construction restoration in McCormick and Janes Ravines, as well as some work along the lakeshore.

These activities necessitate the closure of the lakeshore to the public. It is likely the lakeshore will remain closed until October 2016. The remainder of Fort Sheridan Forest Preserve remains open.

Des Plaines River Watershed Plan



Natural Resources Staff will be involved in Lake County Stormwater Management’s watershed planning effort for the Des Plaines River Watershed. SMC will be conducting a watershed assessment this summer, and the District will be providing access and equipment to assist with the assessment. Additionally, District staff is participating with the Des Plaines River Watershed Working Group, which is planning to conduct extensive ecological and water quality testing of streams and lakes in the Des Plaines River watershed. As part of the District’s annual lake monitoring assessment program, the District will provide staff and funds for lake surveys in the watershed.

Controlled Prescribed Burn Season

The controlled prescribed burn season is under way and, to date, we have had 7 burn days and 14 burn events at 12 forest preserves, totaling 1,100 acres. Signs, notifications and the District’s webpage are being utilized to notify the public and our partners.

Native Seed Nursery 2015

Nursery volunteers donated 2,645.25 hours (equivalent to 65 weeks of full-time work) over 115 total workdays, a record high since the beginning of the program. The work was done by 81 individual volunteers and 5 groups, plus staff workdays.

The processing of the 2015 harvest was completed early in 2016, yielding 187 species that totaled over 391 pounds and 791 million seeds. The estimated value for the 2015 harvest was a \$211,000 plus 44 priceless species (about 25 pounds of the total weight).*

**By comparison: the 2014 harvest totaled 280 pounds and an estimated 400 million individual seeds from over 200 species. The 2014 harvest was valued at \$177,000 with 30 priceless species.*



2015/16 Winter Clearing Projects - 17 Projects

<u>2015/16 Winter Clearing Projects - 17 Projects</u>	<u>Contractor</u>	<u>Winter Work Completed</u>
Greenbelt	Trees "R" Us	95%
Singing Hills/Kettle Grove	ENCAP	97%
Woodland Habitat Restoration Project		
Captain Daniel Wright Woods (3 projects)	Clean Cut Tree Service	Complete
Lloyd's Woods	Tallgrass Restorations	Complete
Edward L Ryerson Conservation Area	ILM	Complete
MacArthur Woods	ILM	Complete
Grassy Lake	Homer Tree	99%
Spring Bluff - Grant Funded	Tallgrass Restoration	Complete
Van Patten Woods	In-House Staff	95%
Grant Woods- Private Donation	Applied Ecological Services	Complete
Grant Woods	In-House Staff	98%
Cuba Marsh	Inland Landscape Group	98%
Lakewood - CIP		
Preserve Boundary Enhancement	Trees "R" Us	90%
Schreiber Bog Area	Trees "R" Us	Complete
Wadsworth Savanna – Habitat Restoration Fund	Clean Cut Tree Service	Complete

2015/16 Native Seeding by In-House Crews

Native seeding was completed by in-house crews at the following preserves: Grassy Lake, Wadsworth Savanna, Cuba Marsh, Lakewood, Greenbelt, Grant.

Volunteers

Herbicide licenses have been secured for all volunteers.

New equipment (chain saws, loppers, etc.) was purchased with funding from the District's Preservation Foundation.