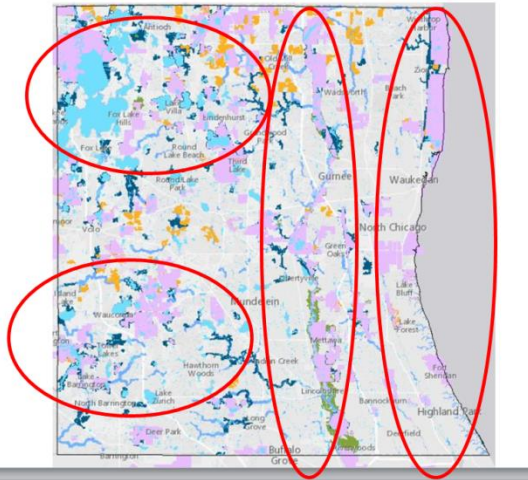




**Natural Resource Department**  
**February 2016 – PROGRESS REPORT**



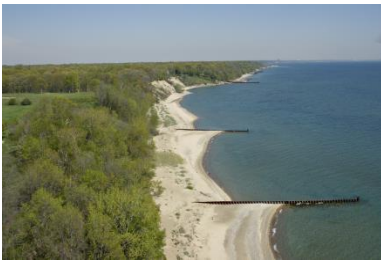
**Green Infrastructure Model and Strategy**

A work session with the Committee of the Whole and Lake County Partners was led by The Conservation Fund and Lake County Forest Preserve District staff on February 4<sup>th</sup>. Commissioners and Partners identified potential locations for 3 to 5 10,000-acre ecological complexes. This feedback will be reviewed and discussed by the GIV project working group.

**Deer Management Program**

Removals were completed February 3, 2016. We have removed 287 deer from 7 preserves.

**Fort Sheridan Great Lakes Fish and Ecosystem Restoration Program**



Habitat restoration of the bluffs and ravines is being conducted by Conservation Land Stewardship (Davey Resource Group) and will proceed to March 2016.

Clearing of trees began in Jane's Ravine the first part of February. Some debris removal along the lakeshore may occur if weather conditions permit.

**Native Seed Nursery 2015**

Nursery volunteers donated 2,645.25 hours (equivalent to 65 weeks of full-time work) over 115 total workdays, a record high since the beginning of the program. The work was done by 81 individual volunteers and 5 groups, plus staff workdays.

The processing of the 2015 harvest was completed early in 2016, yielding 187 species that totaled over 391 pounds and 791 million seeds. The estimated value for the 2015 harvest was \$211,000 plus 44 priceless species (about 25 pounds of the total weight).\*

*\*By comparison: the 2014 harvest totaled 280 pounds and an estimated 400 million individual seeds from over 200 species. The 2014 harvest was valued at \$177,000 with 30 priceless species.*



<b><u>2015/16 Winter Clearing Projects</u></b>	<b><u>Contractor</u></b>	<b><u>Winter Work Completed</u></b>
Greenbelt	Trees "R" Us	90%
Singing Hills/Kettle Grove	ENCAP	70%
Woodland Habitat Restoration Project		
Captain Daniel Wright Woods (3 projects)	Clean Cut Tree Service	95%
Lloyd's Woods	Tallgrass Restorations	95%
Edward L Ryerson Conservation Area	Integrated Lakes Management	95%
MacArthur Woods	Integrated Lakes Management	100%
Grassy Lake	Homer Tree	85%
Spring Bluff - Grant Funded	Tallgrass Restoration	100%
Van Patten Woods	In-House Staff	90%
Grant Woods - Private Donation	Applied Ecological Services	70%
Grant Woods	In-House Staff	95%
Cuba Marsh	Inland Landscape Group	75%
Lakewood - CIP		
Preserve Boundary Enhancement	Trees "R" Us	10%
Schreiber Bog Area	Trees "R" Us	95%
Wadsworth Savanna – Habitat Restoration Fund	Clean Cut Tree Service	100%

**2015/16 Native Seeding by In-house Crews**

Native seeding was completed by in-house crews at the following preserves: Grassy Lake, Wadsworth Savanna, Cuba Marsh, Lakewood, Greenbelt, Grant.