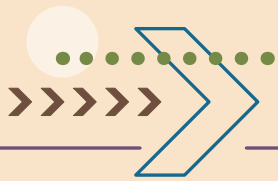


Preserve the Future



Invest in Nature



Imagine strolling through a tranquil forest preserve where the air is crisp, the environment is serene and plants and wildlife thrive. It's the perfect place to find peace and connect with nature. The preserves improve the quality of life for residents, and everyone is welcome.

The potential expansion of these natural sanctuaries is now in the spotlight. Today, we manage more than 31,200 acres of protected areas and 200-plus miles of multiuse trails in Lake County. An upcoming referendum will help chart the future course of your forest preserves.

On November 5, voters will decide on a \$155 million Forest Preserves referendum. If passed, the funding will allow us to build important trail connections, increase access for all, and improve water and air quality while reducing flooding through habitat restoration. We will also acquire more land to create new preserves and expand existing ones, for you and future generations to enjoy.

The estimated property tax increase on a Lake County home valued at \$300,000 is just under \$33 per year or \$2.75 per month. Today, just 1.87% of property taxes collected in Lake County go to fund the Forest Preserves.

If the referendum is not approved, we will have limited ability to save more irreplaceable wildlife habitat and natural areas from development, complete planned trail connections, improve access to existing preserves and carry out critical habitat restoration on hundreds of acres.

A well-connected forest preserve system benefits visitors by providing safe routes for exploration and opportunities to improve physical and mental wellness. Nearly every resident is less than a 10-minute drive from a preserve.



“If approved, the new funding would protect more land and expand the benefits the forest preserves provide to all of us.”

– Alex Ty Kovach, EXECUTIVE DIRECTOR



Lake County
Forest Preserves



LCFPD.org/referendum



Progress and Possibility

Leer en Español: LCFPD.org/referendum

The last time voters considered a Forest Preserves referendum was in 2008, when \$185 million in funding was approved.

Milestones since 2008

- 4,300+**
acres purchased.
- 8**
new preserves opened.
- 77**
miles of trails added.
- 48,000**
native trees planted.
- 5,775**
acres cleared of buckthorn and other invasive species.

With nearly all the dollars from the previous referendum expended or allocated, our board of commissioners has submitted a new question to Lake County voters for funding to continue enhancing and expanding your preserves. Proposed projects will ensure all areas of the county benefit.

If voters approve \$155 million on November 5, we will use:



\$65 million to acquire more land to add new preserves, create a wider network of healthy landscapes and add to existing preserves.

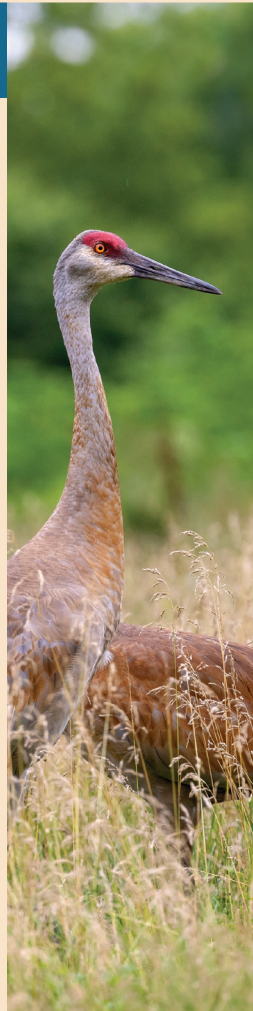


\$30 million to improve water and air quality and reduce flooding by restoring wetlands, prairies, savannas and forests.



\$60 million to build important trail connections, redevelop or open preserves, address maintenance needs and improve energy efficiency.

What it Means ➤ The additional property tax on a \$300,000 home would be less than \$33 a year or \$2.75 a month.



Nature by the Numbers in Your Forest Preserves

- 31,200+**
acres of natural areas.
- 200+**
miles of trails to explore.
- 64**
sites protected and maintained.
- 12,800**
acres of wetlands to reduce flooding.
- 28,850+**
native plant and animal species in Lake County.

Small Piece of the Pie ➤ Where \$100 of Your Property Taxes Go

